

Open G Tuning (Dobro)

①

MAJOR scale

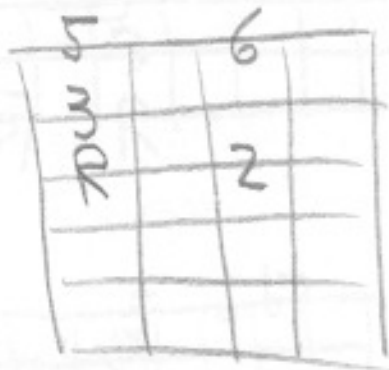
1 2 3 4 5 6 7

	4	6		7	8
mm		2			

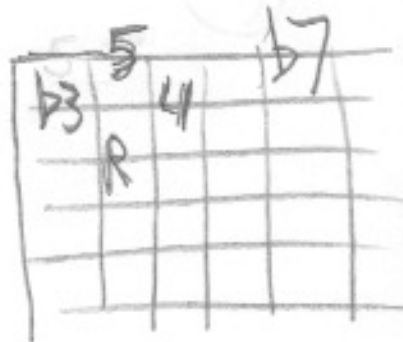
- Major scale 1 2 3 4 5 6 7(8)
- Major chord (Arpeggio) 1 3 5
- Major Pentatonic 1 2 3 5 6 (8)
- Minor Pentatonic 1 b3 4 b5 b7 (8)
- Blues scale 1 b3 4 b5 5 b7 (8)



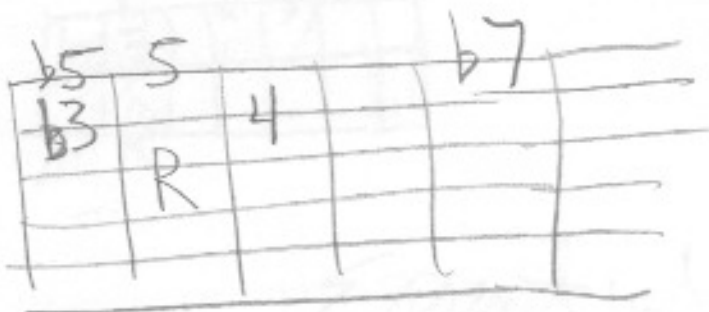
MAJOR ARpeggio



MAJOR Pentatonic



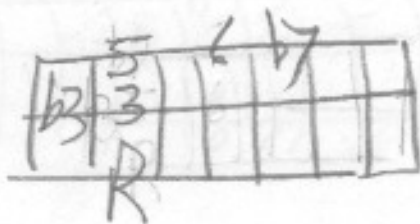
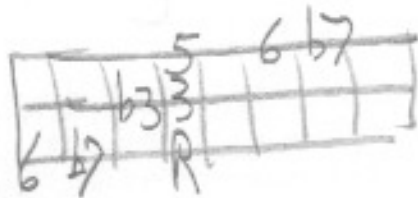
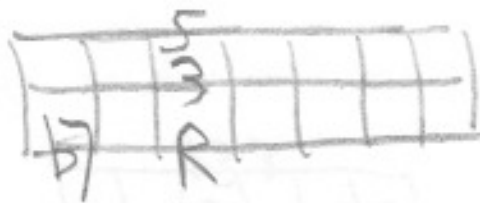
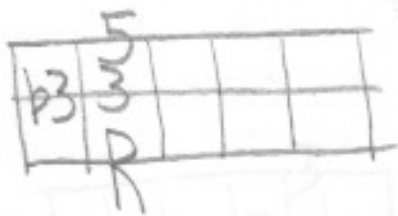
MINOR Pentatonic



Blues Scale

Intervals

- 1) Major Arpeggio
- 2) b3 (blue note) to 3
- 3) 6 to b7 (blue note)
- 4) Major pentatonic scale
- 5) major scale

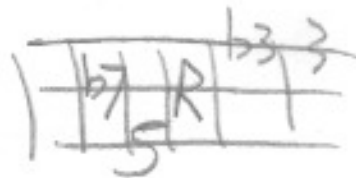


Essential Intervals

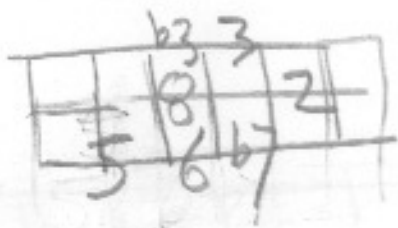
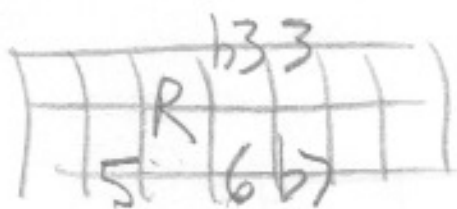
- 1) Major Arpeggio
- 2) b3 (Blue note) to 3
- 3) 6 to b7 (blue note)
- 4) Major pentatonic Scale
- 5) Major scale

(4) (5)

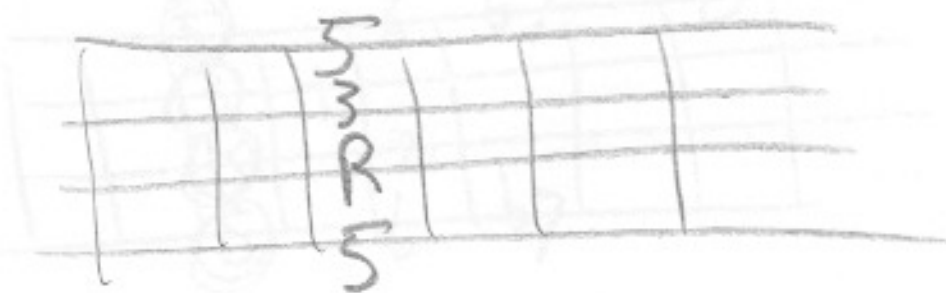
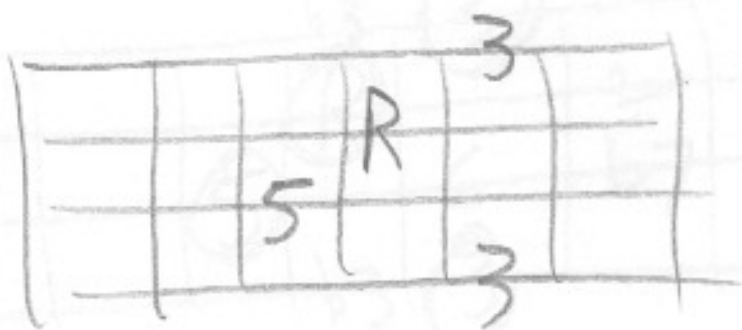
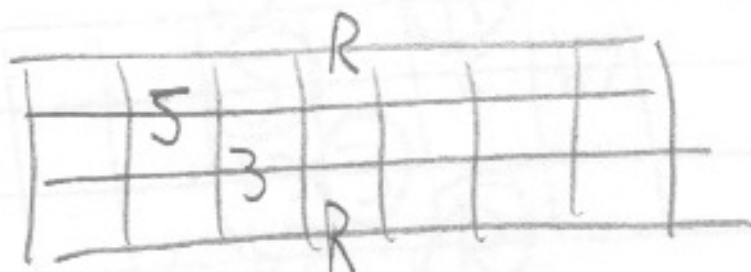
Top 3 G Major Arpeggios



Major Arpeggio



Top 3 G Major Arpeggios (5)



ADDING color

